




## 15" Rear Mount SAW Touch Monitor

### 15" Surface Acoustic Wave Touch Monitor Rear Mount

 This is a series of GeneralTouch' s rear mount touch monitor. It not only inherits the advantages of traditional SAW products, such as reliability, durability, high clarity and scratch resistance, but also can provide vandal proof, anti-glare optional. The LED backlight module provides a slim look, longer life, and lower power consumption for the touch monitor. It's the best choice for various public applications such as self-service terminals, kiosks, interactive digital signage etc.

#### Features & Applications

##### Features

- ◆ vandal proof/anti-glare/privacy filter optional
- ◆ Pure glass touchscreen delivers superior image quality
- ◆ Various mounting options (Side Mount VESA Mount 75 mm & 100mm)
- ◆ Continues to work even with scratches
- ◆ Easy integration and low maintenance
- ◆ Excellent performance, accuracy and reliability with drift-free operation

##### Applications

- ◆ Self-service terminals
- ◆ Ticketing machines
- ◆ Gaming machines
- ◆ Retail Point-of-Sale (POS) terminals
- ◆ Transportation Point-of-Information (POI)
- ◆ Office automation

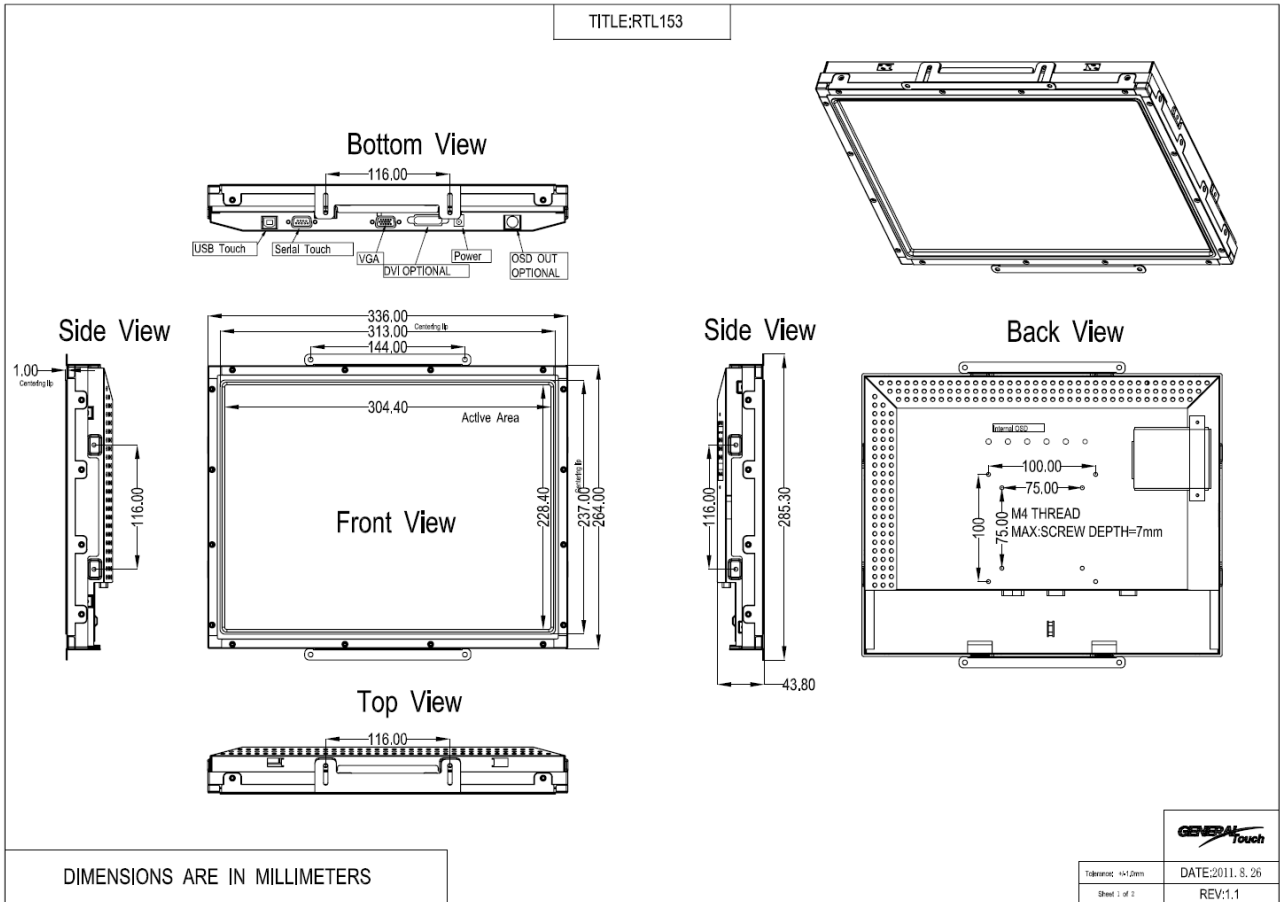
# SPECIFICATIONS

Name	15 Inch Rear Mount Touch Monitor	
Model	RTL153	
<b>LCD Panel Parameters</b>		
• Display Ratio	4:3	
• Backlight Type	LED	
• Active Display Area	304.128mm*228.096mm	
• Pixels H x V	1024*768	
• Response Time(typ.)	16ms	
• Support Color	16.7M	
• White Luminance(typ.)	420cd/m2	300cd/m2
• Contrast Ratio	800:1	
• Viewing Angle(cr≥10)	Horizontal: 160°(80°/80°) (Typ.)	Vertical: 160°(80°/80°) (Typ.)
• Vertical Frequency(typ.)	60Hz	
• Led life time(typ.)	30000Hrs (Brightness of LED becomes to 50% of its original value)	
<b>Touch Screen Parameters</b>		
• Touch Technology	Surface Acoustic Wave(SAW)	
• Active Touch Area	304.40mm*228.40mm	
• Glass Thickness	6mm	
• Dust proof	IP5X	
• vandal proof(optional)	Impact Resistance: Strength can meet IEC60950 ball drop test (0.5 kg, 50 mm diameter ball dropped from height of 1.3 m)	
• Anti-Glare(optional)	Gloss :80± 15	
• Touch Response Time	10.4ms	
• Light Transmission	90%	
• Surface Hardness	Mohs' hardness rating of 7	
• Touch-Screen Interface	RS232/USB	
<b>Touch Monitor Parameters</b>		
• Mounting Options	Rear Mount, VESA Mount 75mm*75mm&100mm*100mm	
• privacy filter(optional)	Light Transmission: 60%±5	horizontal privacy: 60°±10°
• Video Input Format	VGA	
• Outline Dimensions	336.00mm*264.00mm*43.80mm	
• Power Supply	External Adapter:100-240VAC,50-60Hz	Input Voltage Range: +12VDC ± 5%
• On Screen Display (OSD)	Control(back): Power, Menu, Up, Down, Auto	
• Power Consumption(Max)	25W	
• Packing size	440mm*370mm*185mm	
• Weight	Shipping (Approximately):5kg	
• Temperature Range	Operating: 0°C-40°C,storage: -20°C-60°C	
• Humidity (Non Condensing)	Operating: 20%-80%,storage: 10%-90%	

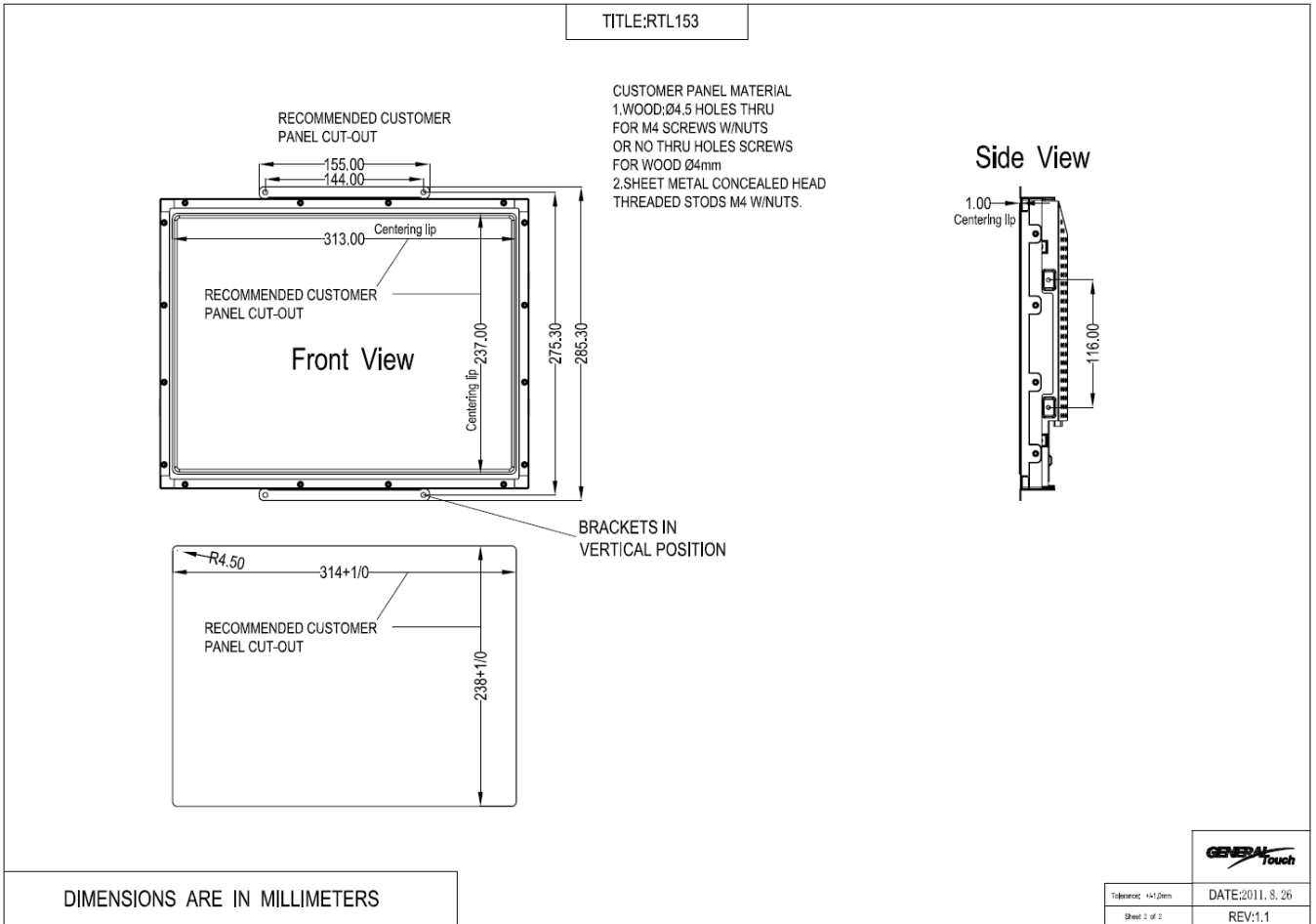
### Touch Monitor Parameters

- MTBF 50000Hrs(Mean Time Between Failures)
- Agency Approvals FCC/CE
- Warranty 3years(LED panel 1 year )

### Touch Monitor Drawing



Touch Monitor Drawing



Item	Version	Date	Description	Changed by
1	0.1	2016/07/01	First Release	Long Kou
2				
3				

Go to [www.generaltouch.com](http://www.generaltouch.com) for more products and information, or contact us. General Touch Co., Ltd. reserves the right to change or update the information contained in this document without notice, and also has the right to discontinue or limit the production and distribution of any products.

Tel: 0086-28-85124114  
 Fax: 0086-28-85124115  
 E-mail: [sales@generaltouch.com](mailto:sales@generaltouch.com)  
<http://www.generaltouch.com>