




15" Open Frame SAW Touch Monitor

15" Surface Acoustic Wave Touch Monitor Open Frame

 This is a series of GeneralTouch' s open frame touch monitor. It not only inherits the advantages of traditional SAW products, such as high reliability, high durability, high clarity and scratch resistance, but also can provide dust proof, water proof, vandal proof, anti-glare optional. The LED backlight module provides a slim look, longer life, and lower power consumption for the touch monitor. It's the best choice for various public applications such as self-service terminals, kiosks, interactive digital signage etc.

Features & Applications

Features

- ◆ water proof/vandal proof/anti-glare/privacy filter optional
- ◆ Pure glass touchscreen delivers superior image quality
- ◆ Various mounting options (Side Mount VESA Mount 75 mm & 100mm)
- ◆ Continues to work even with scratches
- ◆ Easy integration and low maintenance
- ◆ Excellent performance, accuracy and reliability with drift-free operation

Applications

- ◆ Self-service terminals
- ◆ Ticketing machines
- ◆ Gaming machines
- ◆ Retail Point-of-Sale (POS) terminals
- ◆ Transportation Point-of-Information (POI)
- ◆ Desktop touch monitor (fit base)
- ◆ Office automation

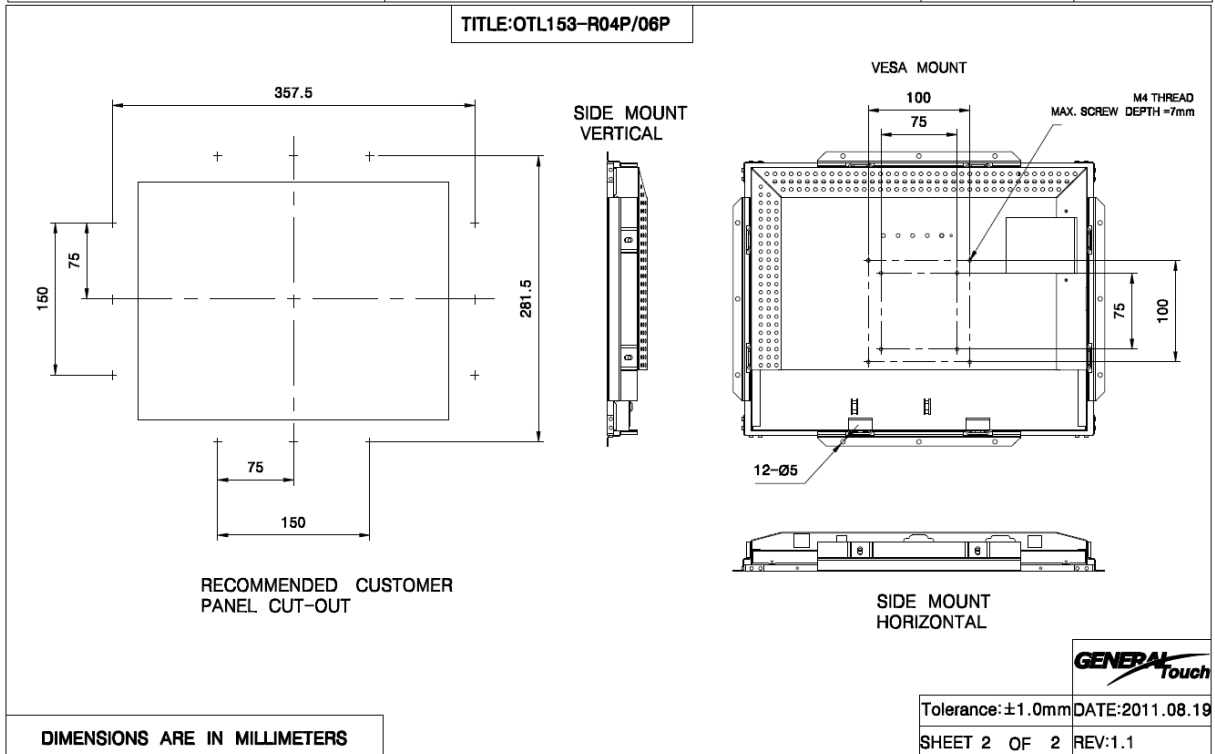
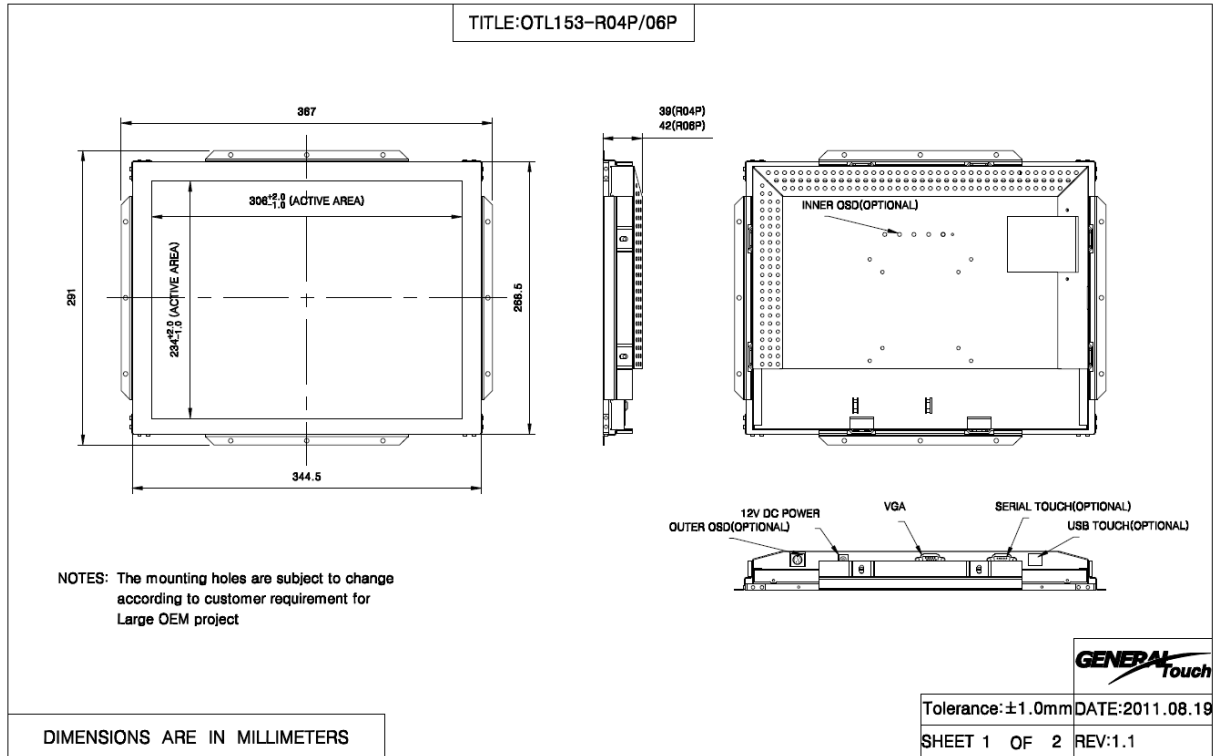
SPECIFICATIONS

Name	15 Inch Open Frame Touch Monitor	
Model	OTL153	
LCD Panel Parameters		
• Display Ratio	4:3	
• Backlight Type	LED	
• Active Display Area	304.128mm*228.096mm	
• Pixels H x V	1024*768	
• Response Time(typ.)	16ms	
• Support Color	16.7M	
• White Luminance(typ.)	420cd/m2 300cd/m2(optional)	
• Contrast Ratio	800:1	
• Viewing Angle(cr≥10)	Horizontal: 160°(80°/80°) (Typ.)	Vertical: 160°(80°/80°) (Typ.)
• Vertical Frequency(typ.)	60Hz	
• Led life time(typ.)	30000Hrs (Brightness of LED becomes to 50% of its original value)	
Touch Screen Parameters		
• Touch Technology	Surface Acoustic Wave(SAW)	
• Active Touch Area	306mm*234mm(dust proof) 306mm*230mm(water proof)	
• Glass Thickness	4/6mm	
• Dust proof	IP6X	
• Water proof(optional)	IPX4	
• vandal proof(optional)	Impact Resistance: Strength can meet IEC60950 ball drop test (0.5 kg, 50 mm diameter ball dropped from height of 1.3 m)	
• Anti-Glare(optional)	Gloss :80± 15	
• Touch Response Time	10.4ms	
• Light Transmission	90%	
• Surface Hardness	Mohs' hardness rating of 7	
• Touch-Screen Interface	RS232/USB	
Touch Monitor Parameters		
• Mounting Options	Side Mount, VESA Mount, 75mm*75mm&100mm*100mm	
• privacy filter(optional)	Light Transmission: 60%±5	horizontal privacy: 60°±10°
• Video Input Format	VGA	
• Outline Dimensions(without bracket)	344.5mm*268.5mm*42mm(dust proof)	350mm*274mm*42mm(water proof)
• Power Supply	External Adapter:100-240VAC,50-60Hz	Input Voltage Range: +12VDC ± 5%
• On Screen Display (OSD)	Control(back): Power, Menu, Up, Down, Auto	
• Power Consumption(Max)	25W	
• Packing size	525mm*460mm*185mm	
• Weight	Monitor/Shipping (Approximately):TBD	

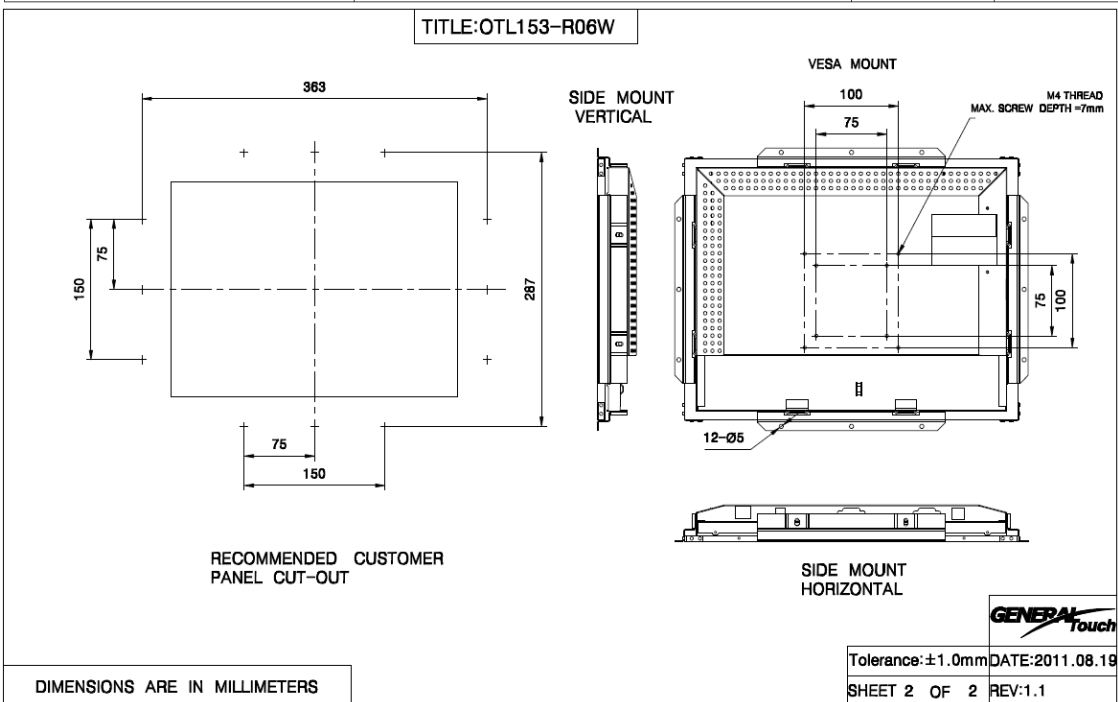
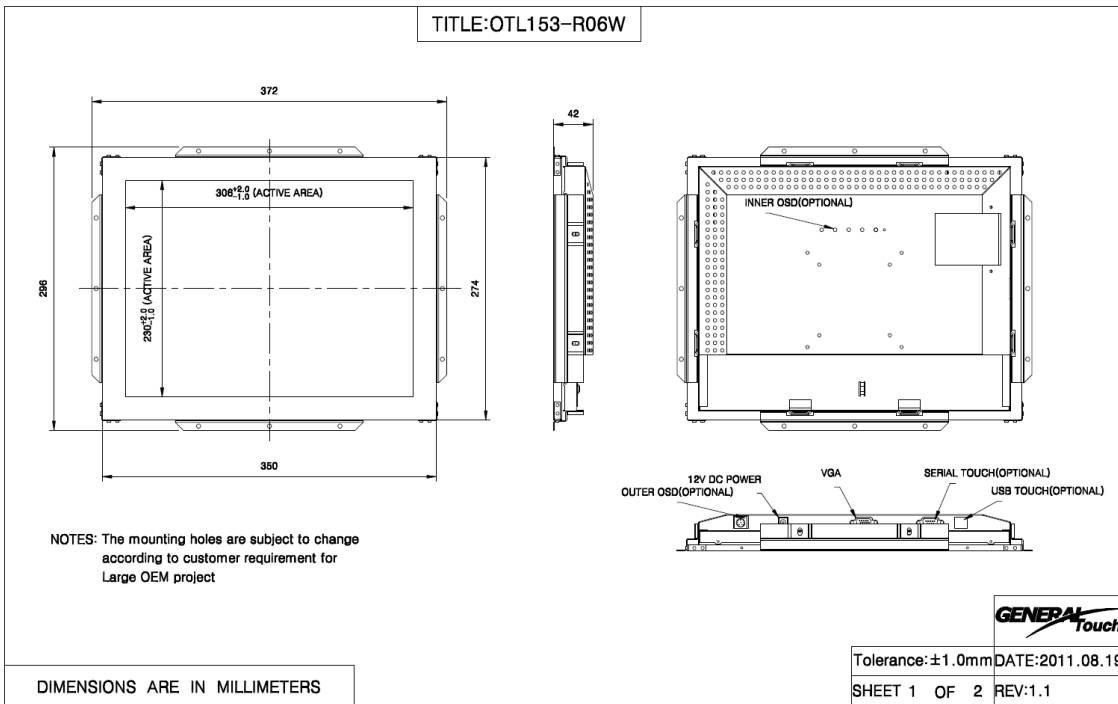
Touch Monitor Parameters

- Temperature Range Operating: 0°C-40°C,storage: -20°C-60°C
- Humidity (Non Condensing) Operating: 20%-80%,storage: 10%-90%
- MTBF 50000Hrs(Mean Time Between Failures)
- Agency Approvals FCC/CE
- Warranty 3years(LED panel 1 year)

Touch Monitor Drawing Dust proof



Touch Monitor Drawing water proof



Item	Version	Date	Description	Changed by
1	0.1	2016/07/01	First Release	Long Kou
2				
3				

Go to www.generaltouch.com for more products and information, or contact us.
 General Touch Co., Ltd. reserves the right to change or update the information contained in this document without notice, and also has the right to discontinue or limit the production and distribution of any products.

Tel: 0086-28-85124114
 Fax: 0086-28-85124115
 E-mail: sales@generaltouch.com
<http://www.generaltouch.com>