

# 15" Desktop Touch Monitor

**DTL153**  
**Monitor Datasheet**  
**Rev:1.5**



## ***Feature***

- ✚ Cost effective touch monitor solution
- ✚ Long lasting product cycle: Mechanical parts controlled in house by GeneralTouch so that future upgrading do not bring external size changes.
- ✚ Fast Touch response time
- ✚ Supplied with Serial or USB touch interface
- ✚ Multi-Language and detachable On Screen Display(OSD)

## ***Typical Applications***

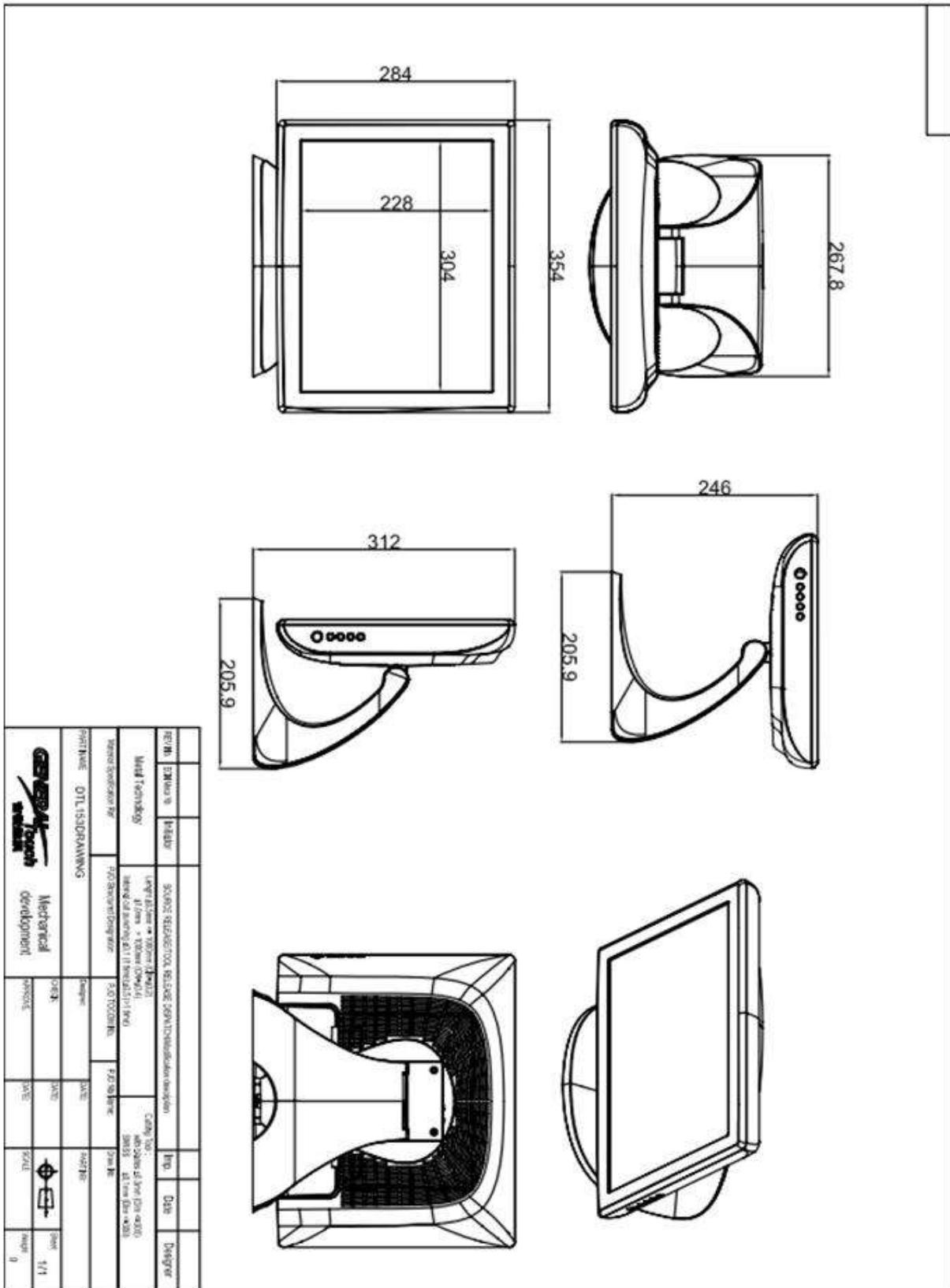
- ✚ Gaming/Casino Systems
- ✚ Outdoor and indoor Kiosks
- ✚ Entertainment
- ✚ Transport and Ticketing
- ✚ Hospitality
- ✚ Banking
- ✚ Customized Solutions

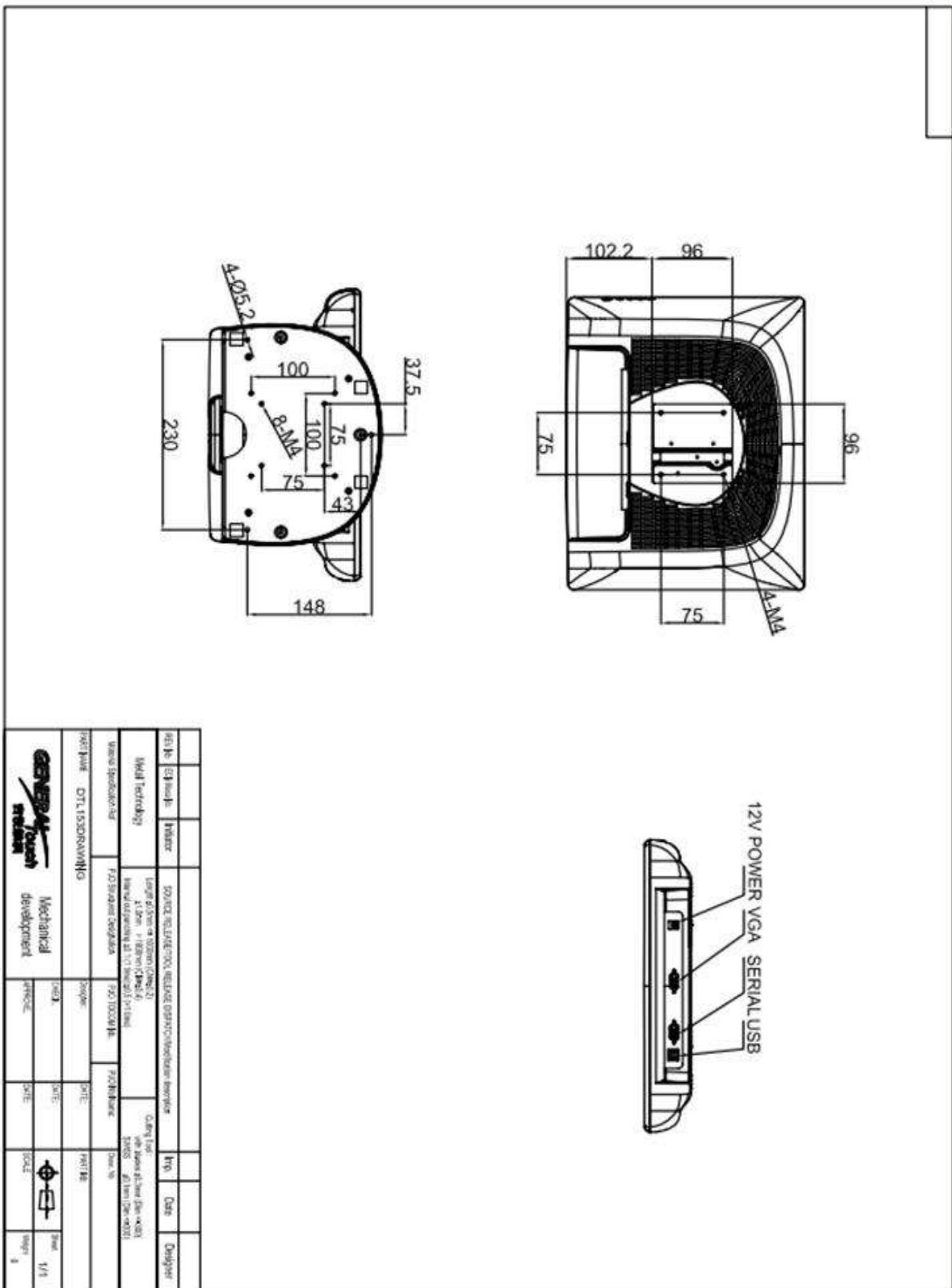
## Specification:

|                                   |                                     |  |
|-----------------------------------|-------------------------------------|--|
| Model                             |                                     | DTL153                                     |
| Description                       |                                     | 15" TFT Open Frame Touch Monitor           |
| Case/Bezel Color                  |                                     | Black                                      |
| Monitor Performance               |                                     | Standard                                   |
| Display Type                      |                                     | 4:3 Ratio 15" Active Matrix TFT LCD        |
| Active Display Area               | LCD Panel                           | 304mm×228 mm                               |
| Native Resolution                 | Typ.                                | 1024×768@60Hz                              |
| Synchronization Range             |                                     | 30-80KHz horizontal, 55-75Hz Vertical      |
| Pixel Pitch                       |                                     | 0.297mm×0.297mm                            |
| Pixel Response Time               | Typ.                                | 8ms  |
| Plug and Play                     |                                     | VESA DDC 1/2B                              |
| On Screen Display(OSD)            |                                     | Control(side): Power, Menu, Up, Auto, Down |
| Colors                            |                                     | 16.2million                                |
| Luminance(LCD Panel)              | Typ.                                | 250cd/m <sup>2</sup>                       |
| Contrast Ratio                    | Typ.                                | 500:1                                      |
| Viewing Angle(from centre, CR≥10) | Horizontal(left/right)<br>Typ.      | 150°(75°/75°)                              |
|                                   | Vertical(up/down)<br>Typ.           | 130°(70°/60°)                              |
| Backlight Lamp Life               | Hrs to 1/2 brightness               | 50,000                                     |
| Input Video Format                |                                     | Analog(VGA)                                |
| Touch Technology                  |                                     | Surface Acoustic Wave / Resistive          |
| Touch Interface                   |                                     | Dual Serial / USB                          |
| Touch Response Time               | Serial/USB                          | 10.4ms(SAW)                                |
| Touch Sensitivity                 |                                     | Fixed                                      |
| Glass Thickness                   |                                     | Normal strength 3mm                        |
| Monitor Dimensions                |                                     | 354mm×312mm×206mm                          |
| Shipping Carton Dimensions        | SAW Touch Monitor                   | 445mm×445mm×300mm                          |
| Weight                            | Monitor/Shipping<br>(Approximately) | 4.8kg/7.1kg                                |
| Mounting Options                  |                                     | Desktop;<br>Wall Mount, VESA75mm x 75mm    |
| Power Supply                      |                                     | External Adapter: 100-240VAC, 50-60Hz      |
| Power Consumption                 | Max                                 | 36W  |
| Temperature Range                 |                                     | Operating: 0°C-40°C, Storage: -20°C-60°C   |
| Relative Humidity                 | Non Condensing                      | Operating: 20%-80%, Storage: 10%-90%       |
| Warranty                          |                                     | 3years*                                    |
| Agency Approvals                  |                                     | FCC, CE, UL, CCC, RoHS.                    |

\* LCD panel warranty: 1 year

Appendix:  
Drawing





GeneralTouch Technology Co.Ltd. reserves the right to change or update the information contained in this document without notice, and also have this right to discontinue or limit the production and distribution of any products.